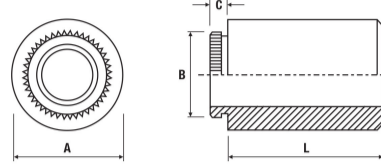
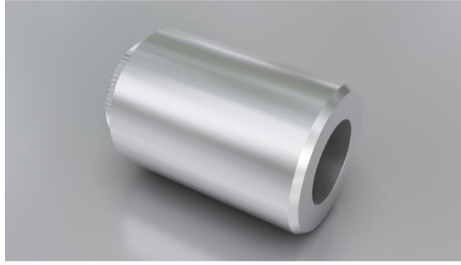


Broaching Clear Hole



Type: SF-KFE or SF-KFSE

SF-KFE/SF-KFSE

Material Code

Steel/zinc = SF-KFE

Stainless steel = SF-KFSE

How to order

Type + Through Hole + Length

Example: SF-KFE-3.6-3 or SF-KFSE-4.2-6

Through Hole	A ±0.13 mm	B ±0.08 mm	C max. mm	L ±0.13 mm	Sheet Thickness min. mm	Rec. Hole Size +0.08 mm	Distance Centre Hole to Sheet Edge min. mm	Please note!
3.6	7.14	5.87	1.53	3	1.53	5.41	5.5	SF-KFSE L=4
4.2	8.74	6.86	1.53		1.53	6.4	7.1	Quote required

