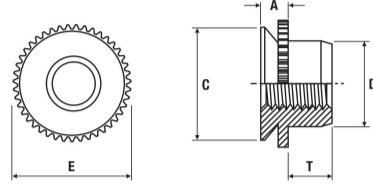


Self-Locking Mini Squeezed



SF-FE or SF-FEO



SF-FE/SF-FEO

Material Code

Stainless steel / black dry film lubricant = SF-FE or SF-FEO

How to order

Type + Thread

Example: SF-FE-M5 or SF-FEO-M4

Thread	A max. mm		C -0.13 mm	D max. mm	E ±0.13 mm	T +0.4 mm	Sheet Thickness mm		Rec. Hole Size +0.08 mm	Distance Centre Hole to Sheet Edge min. mm	Please note!
	SF-FE	SF-FEO					SF-FE	SF-FEO			
M3	1.53	1.02	4.37	3.96	4.88	1.9	1.50-1.78	0.99-1.14	4.39	3.6	
M4	1.53	1.02	7.37	5.23	8.17	2.55	1.50-1.78	0.99-1.14	7.39	5.2	
M5	1.53	1.02	7.37	6.48	8.17	3.05	1.50-1.78	0.99-1.14	7.39	5.2	
M6	1.53	1.02	8.72	7.72	9.74	3.3	1.50-1.78	0.99-1.14	8.74	7.1	

