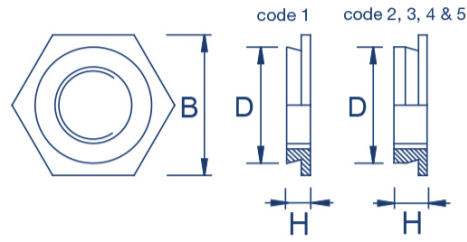
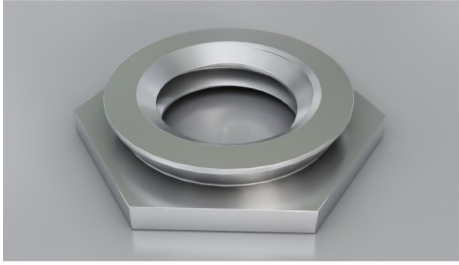


Flush



Type: SF-F or SF-F4

SF-F/SF-F4

Material Code

Stainless steel = SF-F

Grade400 stainless steel = SF-F4

How to order

Type + Thread + Sheet Code

Example: SF-F-M3-2 or SF-F-3.5M3-1

Thread	B ± 0.2 mm	D max. mm	H max. mm	Sheet Code min. mm	Sheet Thickness min. mm	Rec. Hole Size + 0.08 mm	Distance Centre Hole to Sheet Edge min. mm	Please note!
M2	4.8	4.35	1.53	1	1.53-2.30	4.37	6.0	
			2.30	2	2.32			
M2.5	4.8	4.35	1.53	1	1.53-2.30	4.37	6.0	
			2.30	2	2.32			
M3	4.8	4.35	1.53	1	1.53-2.30	4.37	6.0	
			2.30	2	2.32			
3.5M3	6.4	5.35	1.53	1	1.53-2.30	5.4	6.5	
			2.30	2	2.32			
M4	7.9	7.35	1.53	1	1.53-2.30	7.37	7.2	
			2.30	2	2.32			
M5	8.7	7.90	1.53	1	1.53-2.30	7.92	7.0	
			2.30	2	2.32			
M6	9.5	8.72	3.05	3	3,18-3.94	8.74	8.8	
			3,84	4	3.96-4.72			
			4,63	5	4.75			

