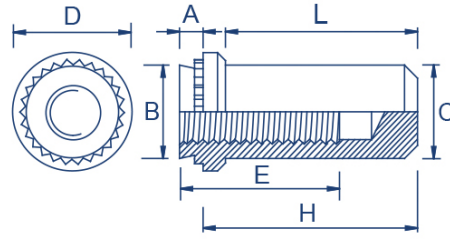
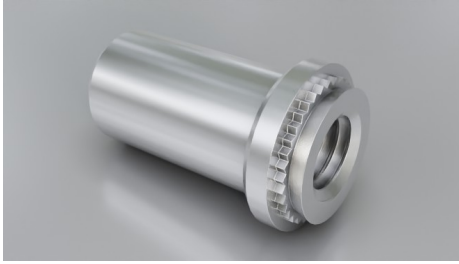


# Blind



Type: SF-B or SF-BS

SF-B/SF-BS

## Material Code

Steel/zinc = SF-B

Stainless steel = SF-BS

## How to order

Type + Thread + Sheet Code

Example: SF-B-M5-2 or SF-BS-M5-1

Thread	A max. mm	B max. mm	C max. mm	D ± 0.25 mm	E min. mm	H ± 0.25 mm	L max. mm	Sheet Code	Sheet Thickness min. mm	Rec. Hole Size + 0.08 mm	Distance Centre Hole to Sheet Edge min. mm	Please Note!
M3	0.97	4.20	3.84	6.35	5.3	9.6	8.5	1	1.0	4.22	4.8	
	1.38							2	1.4			
M4	0.97	5.38	5.20	7.95	7.1	11.2	9.8	1	1.0	5.41	6.9	
	1.38							2	1.4			
M5	0.97	6.33	6.02	8.75	7.1	11.2	9.8	1	1.0	6.35	7.1	
	1.38							2	1.4			
M6	1.38	8.73	7.80	11.1	7.8	14.3	12.7	1	1.4	8.75	8.6	
	2.21							2	2.29			

