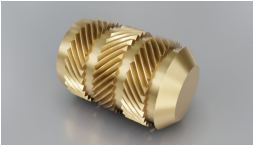
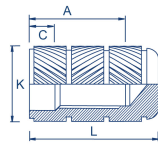


# FlowSert



Type: Flow



Flow

## Material Code

B = brass

## General information

- Blind ended - prevents ingress of plastic.
- Counterbore prevents ingress of plastic and eases assembly on locating pins.
- Rolled threads reduce risk of contamination of mouldings due to metal swarf.
- High levels of performance in both pull-out and torque tests.

## How to order

Type + Thread + Alt. Length (if applicable) + Material Code

Example: Flow-M3-B

Thread	L mm	K mm	C min. mm	A mm	Please note!
M2	5.5	3.4	3.6	1.0	
M2.5	6.4	4.3	4.0	1.2	
M3	7.3	4.7	4.6	1.3	
M3.5	9.2	5.5	6.0	1.6	
M4	10.2	6.3	6.7	1.8	
M5	11.2	7.3	7.4	2.0	
M6	14.4	9.8	8.1	2.0	
M8	16.5	11.4	11.1	2.3	
M10	17.9	13.8	11.9	2.4	